

# On the Method Development for Electricity Load Forecasting

Jelena Milojković and Vančo Litovski

**Abstract**—The way of development a method for systematic prediction of electricity load at suburban level is described. Steps that were passed are described and the evolution of the method is illustrated by proper examples. Prediction of electricity load at annual, monthly, daily and hourly level as well as peak consumption is considered. Comparisons with some other's results are given, too.

**Key words**—prediction, artificial neural networks, electronics, electricity load.

## I. INTRODUCTION

Prediction in everyday life and especially prediction in industry and business is of great importance. Economists are among the most interested professionals for prediction. Frequently, however, the rules underlying and governing the phenomenon to be predicted are not defined by human behavior only but by other conditions of technical and environmental nature, too. Here is why we are trying to do prediction based on our knowledge of both domains including the mathematical models involved.

Natural and social phenomena are mostly of stochastic nature and that is why most of the prediction methods are looking for values that characterize such set of events: trend, periodicity and dispersion. In many cases, however, we are after a value given deterministically since variance may be not informative enough for taking industrial or environmental action. For that reason, alike economists, we are considering deterministic prediction based on series of samples representing the behavior of the phenomena in the past.

As for the length of the series, when statistical methods are applied one has to have a relative large number of consecutive samples in order to catch all the stochastic properties of the phenomenon. In industrial and many other social conditions, however, frequently, no such data are available. Furthermore, in many cases old data are of no importance due to emergence of new governing rules that fundamentally change the flow of the phenomenon. For example, a set of new buildings connected to an existing suburban power source, may change both the average amount of power drawn and to introduce new shape of the consumption profile due to the habits of the

new settlers. For that reason very old, and even medium old, data may be of no use or even misleading and making the prediction more difficult. One is to use as fresh data as possible. Of course, the set must be long enough to capture the periodic nature of the phenomenon being it daily, weekly, monthly or related to a season.

There are frequently doubts as to whether to include environmental data, such as the temperature, into the set for prediction. These data may be known from measurements (already performed) or may be predicted by some other method (by some environmental agency, for example) and used as known data for the future. For the first case, we think that the environmental data already influenced our phenomenon and accordingly that their influence is already incorporated into the main data set. In the second case, we think that the environmental data, predicted elsewhere or by a separate procedure, have a built in error which we do not need to implant into our solution.

There are several methods of deterministic prediction in practical use. We are not reviewing them here since our goal is to report on the development of our method which is based on implementation of artificial neural networks (ANN).

In the next we will go through our publications and illustrate the way how we started with a simple one-input-one-output feed-forward ANN and finished by two complex ANN structures dedicated to prediction. In addition we will explain why one needs at least two solutions in order to have reliable deterministic prediction.

## II. THE DEVELOPMENT OF THE PREDICTION METHOD BASED ON ANN

We first got involved in prediction when considering the subject of electronic waste in Serbia [1]. It came out that there is no systematic way of forecasting of the amount of electronic waste to be found in the literature. In addition, the methods implemented were far of being based known scientific methods. The main reason for that was the lack of data for a longer period in the past.

That inspired us to start with the implementation of ANN that are known as universal approximators. Namely, by using ANN for approximation of a function represented by a set of equidistantly taken samples one automatically solves one of the biggest problems in approximation: the choice of the approximating function. Furthermore, ANNs are known as very successful interpolators which are frequently cited as a generalization property of ANNs. The question was, however,

Jelena Milojković – Innovation centre of advanced technologies, Bulevar Nikole Tesle 61, lok.5, 18000 Niš, Serbia (e-mail: jelena.milojkovic@icnt.rs).

Vančo Litovski – Faculty of Electronic Engineering, University of Niš, 18000 Niš, Aleksandra Medvedeva 14, Serbia, (e-mail: vanco.litovski@elfak.ni.ac.rs).

does ANN can extrapolate.

That we checked in [2]. To predict the amounts of electronic waste we implemented two structures: a feed-forward ANN as depicted in Fig. 1, and a new structure named feed-forward accommodated for prediction -FFAP.

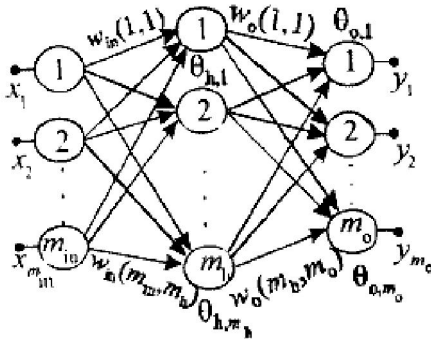


Fig. 1 A fully connected feed-forward neural network with one hidden layer of neurons and multiple input and output terminals

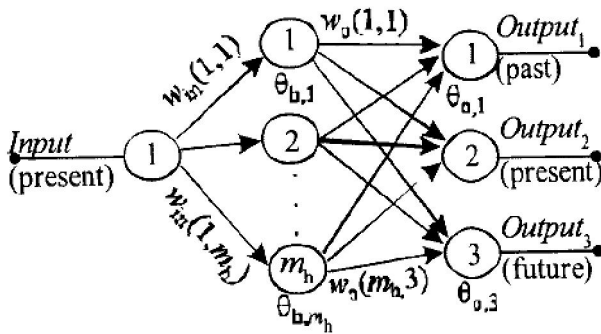


Fig 2. Fully connected feed-forward artificial neural network with one input signal, one hidden layer of neurons and multiple outputs- the FFAP structure

The feed-forward network was implemented with one input being the time and one output being the quantity to be extrapolated. The FFAP structure has the same structure at the input while at the output it has three categories of output terminals. One group (or a single) terminal(s) is used to approximate the past values of the function i.e. these terminals are approximating the given function displaced backwards. The second group (or single) of terminal(s) is approximating the future responses i.e. it learns the function displaced in forwards. Finally, one terminal is learning the actual function. To illustrate Table 1 is presenting a data set which was available the last item used as unknown during the training of the ANN. That value was to be predicted

TABLE I  
AVAILABLE DATA

$t$ (year)	1	2	3	4	5	6
$f(t)$	7.03	8.67	10.0	9.33	9.85	10.1

From that table the training data for the FFAP network were extracted and organized in the form depicted in Table 2. Note, for training the ordinary feed-forward network we had five lessons while for the training of the FFAP we have only

three. The FFAP methods needs two samples to create the first past value (here: 2-7.03) and the last future one (here: 4-9.85). To get the prediction, after trainig, the ordinary feed-forward ANN was exited with  $t=6$ , while the FFAP ANN was exited by  $t=5$ . The result obtained by the FFAP ANN, being 9.81 (meaning that the prediction error was 2.5%) was so encouraging that we kept the FFAP idea all the time doing, however, proper improvements to meet new requirements.

TABLE II  
TRAINING DATA FOR THE FFAP ANN

Training set No.	1	2	3
$t$ (year)	2	3	4
$f(t)$ past	7.03	8.67	10.0
$f(t)$ present	8.67	10.0	9.33
$f(t)$ future	10.0	9.33	9.85

The success of the FFAP network inspired us to enter the subject of prediction of electrical loads. At the beginning we tried to predict the load in near future e.g. two hours [3] [4] [5] [6]. It came out, however, that one may benefit from the quasi-periodic shape of the load function as depicted in Fig. 3.

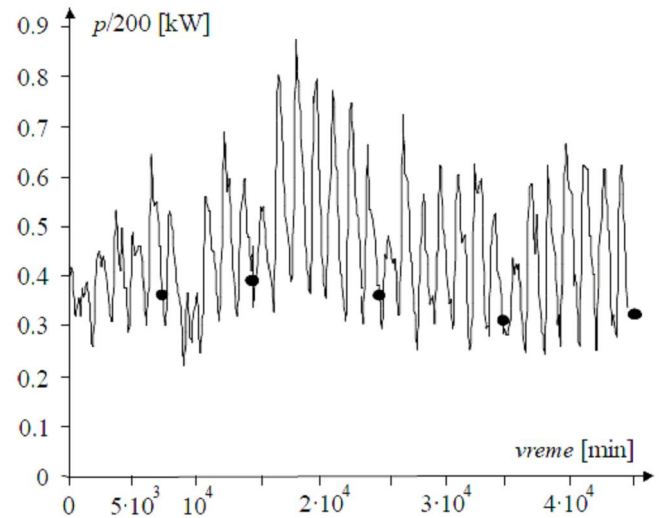


Fig. 3. One month long record of an electricity load at suburban level

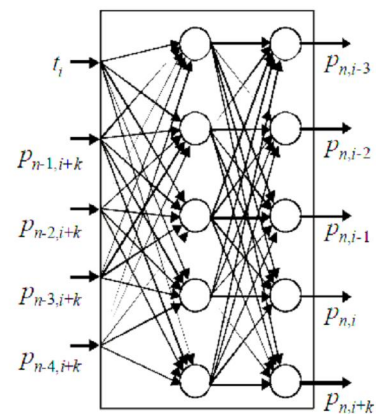


Fig 4. The Extended feed forward accommodated for prediction ANN (EFFAP)

Two types of periodicity may be observed in the data depicted in Fig. 3. First, we have daily periodicity that follows the daily habits of the consumer. In addition there is weekly periodicity which is due to the weekly organization of the human life. To incorporate the first one we simply span the training set over a full day. Twenty-four samples of the load taken every two hours are presented to the network to learn as output values denoted  $p_n$ ,  $i$ - $j$  in Fig. 4. Here  $n$  stands for the week;  $i$  for the lesson, there 20 lessons as the window is moving exposing five values while starting at the 24th sample backward;  $k$  for the number samples in future and for one step ahead prediction is  $k=1$ .) To incorporate the second property we took (four times) one sample of the same time and the same day of the previous weeks as the instant when prediction is to be made and put them as input signals. In that way the new structure named Extended FFAP was created.

The results obtaining were really encouraging.

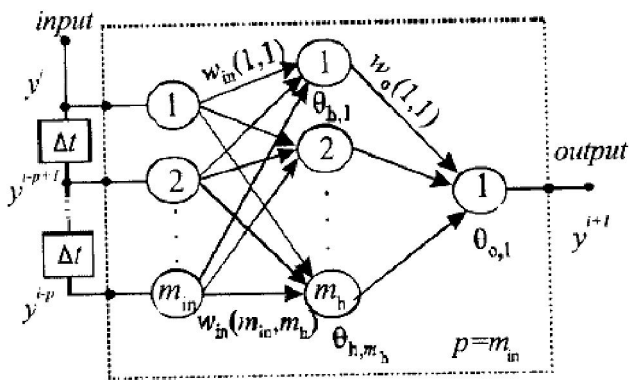


Fig. 5 Time delayed ANN

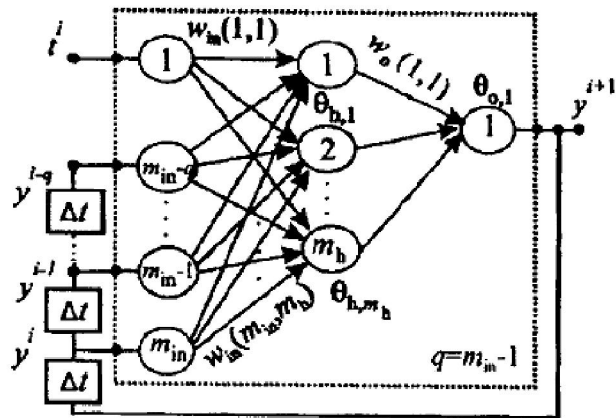


Fig. 6 Time controlled recurrent (TCR) ANN

Alternatively, to improve the performance of the ordinary feed-forward ANN, in [7], we examined the capacities of time delayed ANN (depicted in Fig. 5) and the time controlled recurrent (TCR) (Fig. 6) which is, in fact, our construct and, to our knowledge, cannot be found elsewhere in the literature. The prediction results obtained by the TCR ANN were equally good as the ones obtained by the FFAP ANN. That was confirmed in the implementations for prediction in

microelectronics [8] [9].

The subject of multistep prediction we firstly considered in [10] [11] where prediction in microelectronics was sought. Then in [12] [13] [14] we did multistep electricity load prediction. Two concepts were checked. Firstly, the two step ahead prediction was done in two steps. In the first one we made a one step prediction and then we used the result as a known data to proceed to the next step. That approach gave not very successful result. In the second approach we simply predicted two steps ahead skipping the first one. That came out to be much better approach.

Long term (one year) prediction of electricity loads for large areas such as provinces or states has the property of slow change and is not a specific challenge for the prediction algorithm. That was probably the reason why the so called Grey-theory was implemented to that problem. It is, in fact, a method of finding the coefficients of an exponential polynomial which, as one may expect, is working best when the polynomial is of first order. In [15] [16] [17] we implemented TCR and EFFAP ANNs to show that our approach is reaching much better results both in one step and in multistep forecasting.

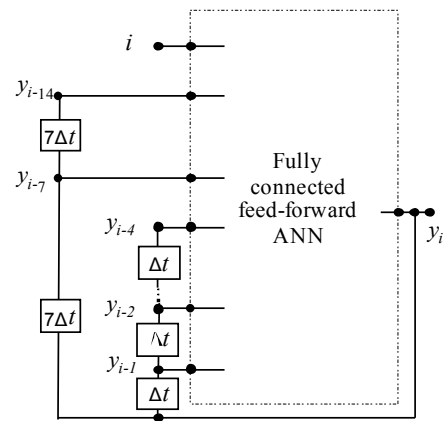


Fig. 7. ETCR. Extended time controlled recurrent ANN

Prediction is a walk in the dark. To rely on it one has to have a least one reference. That is why, in our opinion, for a good results, it is necessary to have at least two prediction that support each other. Considering the EFFAP solution as a good one we tried to implement the TCR in a similar way so that a new structure emerged named Extended TCR (ETCR) [6]. It is depicted in Fig.7. The meaning of the quantities is the same as in Fig.4. Its first implementation was for short term prediction of electricity loads at suburban level. The results were as good as the ones obtained with EFFAP structure.

Having two equally valuable but different results one is to decide which one is to be accepted as a final prediction. We went for the average [18]. It was implemented to short term (two hours) prediction of electricity loads at suburban levels. The first results were as shown in Fig. 8. As can be seen one always get smaller average prediction error than the largest of the two entering the calculation. The benefit is especially

enhanced when the entering prediction errors are of opposite signs as for the 4th hour in Fig. 8.

This concept was later implemented in prediction of the daily peak value of electricity loads at suburban level [19] [20] [21] [22].

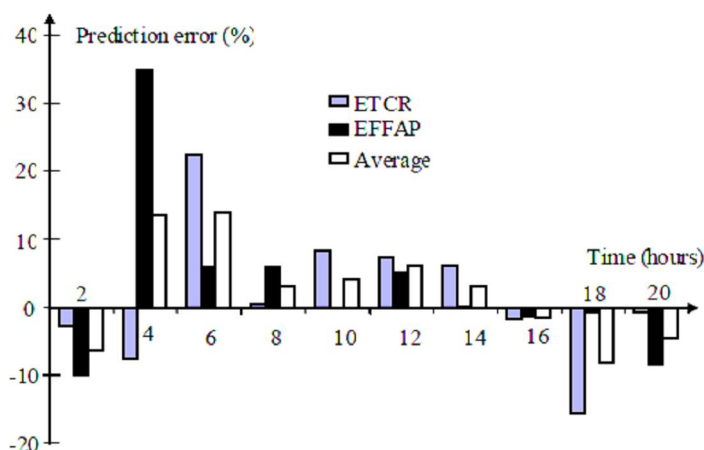


Fig. 8. Prediction results of the EFFAP and the ETCR network and their average

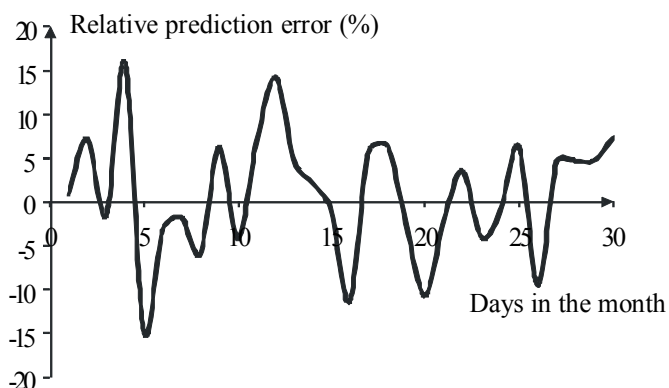


Fig. 9. Relative prediction error of peak value prediction

Fig. 9 depicts the relative prediction error obtained for a thirty consecutive predictions (one month). As can be seen the daily peak load was predicted with an error not exceeding 15% of its value.

It happens in everyday life and in nature that two related phenomena are governed by the same cause. In such a case one may attempt to predict both phenomena based on a single input data set. An attempt to do so for the peak load value and the time when it arises was done in [19] [22]. To illustrate the structure of the appropriate ETCR ANN used for that purpose is depicted in Fig. 10. In fact we doubled the input and the output neurons while keeping the number of the neurons in the hidden layer.

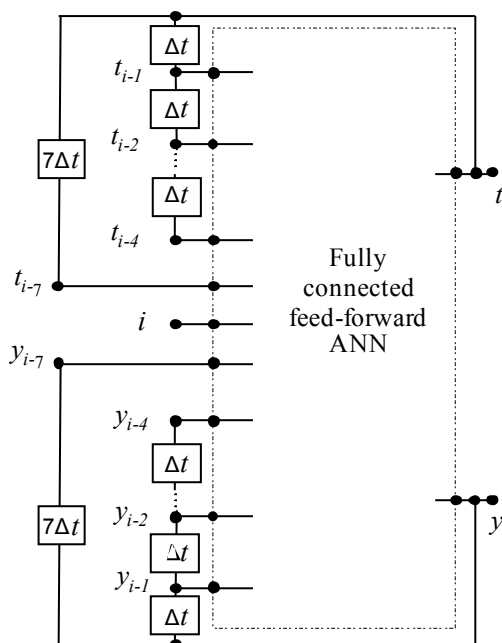


Fig. 10. ETCR. Extended time controlled recurrent ANN approximating two functions simultaneously

### III. CONCLUSION

An historical overview of the development of a method for one- and multi-step prediction in electrical engineering is described. As a result two new structures of ANN were developed and always used concurrently for the same prediction if supporting each other. The results so obtained are averaged so smoothing the final prediction error curve.

### ACKNOWLEDGEMENTS

This research was partly supported by the Serbian Ministry of Education, Science and Technology development under the contract TR32004.

### REFERENCES

- [1] J. Milojković, and V. B. Litovski, "Procedures of prediction of quantities of electronic computer waste", *Tehnika (Elektrotehnika)*, Vol. 56, No. 1, 2007, pp. E.7-E.16. (In Serbian).
- [2] J. Milojković, and V. B. Litovski, "New procedures of prediction for sustainable development", 51th Conference of ETRAN, Herceg Novi, 04-08 Jun, 2007, Proc. on CD, EL1.8. (In Serbian).
- [3] J. Milojković, and V. B. Litovski, "Dynamic Short-Term Forecasting Of Electricity Load Using Feed-Forward ANNs", *Int. J. of Engineering Intelligent Systems for Electrical Engineering and Communication*, ISSN 1472-8915, Vol. 17, No. 1, March 2009, pp. 38-48.
- [4] J. Milojković, and V. B. Litovski, "Short-term forecasting of the electricity load at suburban level", 9th National Conf. with Int. Participation, ETAI 2009, Ohrid, Macedonia, September 2009, Proc. on disc, paper No. A2-1. ISBN 987-9989-2175-5-5
- [5] J. Milojković, and V. B. Litovski, "Short-term forecasting of electricity load using recurrent ANNs", 15<sup>th</sup> International Symposium On Power

- Electronics – Ee2009, Novi Sad, Serbia, 2009, ISSN Paper No. T1-1.7,
- [6] J. Milojković, and V. B. Litovski, “*Short-term Forecasting of Electricity Load Using Recurrent ANNs*”, Electronics, ISSN: 1450-5843, Vol. 14, No. 1, June 2010, pp. 45-49.
- [7] J. Milojković, and V. B. Litovski, “*Comparison of Some ANN Based Forecasting Methods Implemented on Short Time Series*”, 9th Symp. on Neural Network Applications in Electrical Eng., NEUREL-2008, Belgrade, 2008, pp. 179-179.
- [8] J. Milojković, and V. B. Litovski, “*Prediction in Electronics based on limited information*”, Proc. of the 8<sup>th</sup> WSEAS Int. Conf. on Electronics, Hardware, Wireless And Optical Communications, EHAC’09, Cambridge, UK, February 2009, pp. 33-38.
- [9] J. Milojković, and V. B. Litovski, “*One step ahead prediction in electronics based on limited information*”, ETRAN’09, Zbornik radova LIII konf. ETRANa, June 2009, Vrnjačka Banja, Proceeding on a disc, pp. EL 1.7-1-4.
- [10] J. Milojković, and V. B. Litovski, “*Short-term forecasting in Electronics*”, Int. J. of Electronics, ISSN: 0020-7217, Vol. 98, No. 2, 2011, pp. 161-172.
- [11] J. Milojković, S. Bojanić, and V. B. Litovski, “*On Prediction in Electronics*”, Proc. 27th Int. Conf. on Microelectronics (MIEL 2010), Niš, Serbia, 16-19 May, 2010, pp. 275-278.
- [12] J. Milojković, and V. B. Litovski, “*Multistep forecasting in electronics based on reduced information*”, Proc. of the Small Systems Simulation Symposium, SSSS2010, Niš, February 2010, ISBN 987-86-6125-006-4, pp. 42-48.
- [13] J. Milojković, and V. B. Litovski, “*New ANN models for short term forecasting of electricity loads*”, Proc. of the 7th EUROSIM Congress on Modelling and Simulation Vol.2: Full Papers (CD), Czech Technical University in Prague, Faculty of Electrical Engineering, Dept. of Computer Science and Engineering, Prague, Czech Republic ISBN 978-80-01-04589-3, September 2010.
- [14] J. Milojković, and V. B. Litovski, “*New models of prediction of electricity consumption based on ANNs*”, 54th Conf. of ETRAN, Donji Milanovac, June 2010, Proceeding on a disc, ISBN 978-86-80509-65-5 Rad EL1.2, pp.1-4. (In Serbian).
- pp. 1-5. ISBN 86-7892-208-4.
- [15] J. Milojković, and V. B. Litovski, “*ANN Versus Grey Theory Based Forecasting Methods Implemented on Short Time Series*”, 10<sup>th</sup> Symp. on Neural Network Application in Electrical Engineering, NEUREL-2010, Faculty of Electrical Eng., University of Belgrade, Serbia, Sept. 2010, ISBN 978-1-4244-8818-6, pp. 111-116.
- [16] J. Milojković, V. B. Litovski, Nieto-Taladriz, O., and Bojanić, S., “*Forecasting Based on Short Time Series Using ANNs and Grey Theory – Some Basic Comparisons*”, In Proc. of the 11th Int. Work-Conference on Artificial Neural Networks, IWANN 2011, June 2011, Torremolinos-Málaga (Spain). J. Cabestany, I. Rojas, and G. Joya (Eds.): Part I, LNCS 6691, pp. 183–190, 2011, © Springer-Verlag Berlin Heidelberg 2011. ISSN: 0302-9743.
- [17] J. Milojković, and V. B. Litovski, “*Comparison of short term predictions based on the Gary theory and on ANNs*”, Proc. of the 55th Conf. of ETRAN, Banja Vrućica, June 2011, Proceeding on a disc, EL1.3-1-3. (In Serbian).
- [18] J. Milojković, V. B. Litovski, “*Dynamic One Step Ahead Prediction of Electricity Loads at Suburban Level*”, Proc. of the First IEEE Int. Workshop on Smartgrid Modeling and Simulation – at IEEE SmartGridComm 2011, SGMS2011, Brussels, October 2011, Proceedings on disc, paper no. 25.
- [19] J. Milojković, I. Litovski, and V.B. Litovski, “*ANN Application for the Next Day Peak Electricity Load Prediction*”, Proc. of the 11<sup>th</sup> Symp. on Neural Network Application in Electronic Engineering, NEUREL 2012, Belgrade, Sept. 2012, pp. 237-241.
- [20] J. Milojković, V. B. Litovski, “*One day ahead peak electricity load prediction*”, Proceedings of the IX Int. Symp. On Industrial Electronics, INDEL 2012, Banja Luka, November 2012, pp. 263-267.
- [21] J. Milojković, V. B. Litovski, “*One step ahead daily electricity peak load prediction based on ANN*”, Zbornik LVI konf. ETRAN, Zlatibor, ISBN 978-86-80509-67-9, 11.06.-14.06., 2012, EL 3.2.
- [22] J. Milojković, V. B. Litovski, “*Prediction of the peak daily value of electricity load based on ANNs*”, Scientific-professional meeting: Energy efficiency, ENEF 2013, Banja Luka, Nov. 2013, pp. B1-16-B1-21. (In serbian).